



Inchbraoch House  
South Quay  
Montrose  
Angus DD10 9UA  
United Kingdom

Telephone: +44 1674 678120  
Fax: +44 1674 678125

E-mail: [admin@iwcf.org](mailto:admin@iwcf.org)  
[www.iwcf.org](http://www.iwcf.org)

Information Notice No. 2017-04

18-Apr-17

### **Progression and Dispensation Update**

Dear Member,

Following the release of the updated IOGP Report 476 - 'Recommendations for Enhancements to Well Control Training, Examination and Certification' (August 2016), IWCF have revised the process for progression and dispensation.

**As recommended in IOGP 476, employers are responsible for assessing the level of training that an individual should attend.**

As a result of this, we no longer require the Employer Recommendation Form or evidence of qualifications and experience to be submitted. This will significantly improve the booking process for both candidates and accredited training centres.

Instead we now provide the following guidance to our members and accredited training centres:-

Guidance for progression from Level 2 to Level 4 is shown in the attachment (EX-0091 – IWCF Guide for Progression).

Progression from Level 2 to Level 4 is expected for personnel in well-site based operations who are involved in drilling, workover, completion and well intervention activities. The only dispensation route available for Level 2 is for candidates who have completed industry accepted vocational training.

Level 3 training and certification is applicable to equipment operators expected to shut-in a well. For example drillers, assistant drillers and equivalent positions in completions, well-servicing or intervention operations.

**All drilling, workover, completion and intervention engineering and supervisory roles are exempt from Level 3 training and certification, and can progress directly to Level 4.**

Candidates who have previously completed Level 4 Well Intervention Pressure Control assessment and request to attend at Level 4 Drilling Well Control course are no longer required to complete a Level 3 Drilling Well Control course.

We advise that personnel should hold certification which relates to their current role at all times and any dispensation should only be granted by the responsible well operator.

We will continue to engage and support organisations in the development of well control content in both national vocational training programmes and graduate training programmes to ensure these programmes include the required syllabi elements.

ANSI-RAB Certificate No. 11341/1  
RvA Netherlands Certificate No. 11341/2  
IWCF is a non-profit association (Stichting), registered at the Dutch Chamber of Commerce, The Hague, No. 41157732





Inchbraoch House  
South Quay  
Montrose  
Angus DD10 9UA  
United Kingdom

Telephone: +44 1674 678120  
Fax: +44 1674 678125

E-mail: [admin@iwcf.org](mailto:admin@iwcf.org)  
[www.iwcf.org](http://www.iwcf.org)

Please refer to the IOGP 476 report and the 'Well Control Training- Levels Guidance Chart' (<http://www.iogp.org/pubs/476chart.pdf>) for further information.

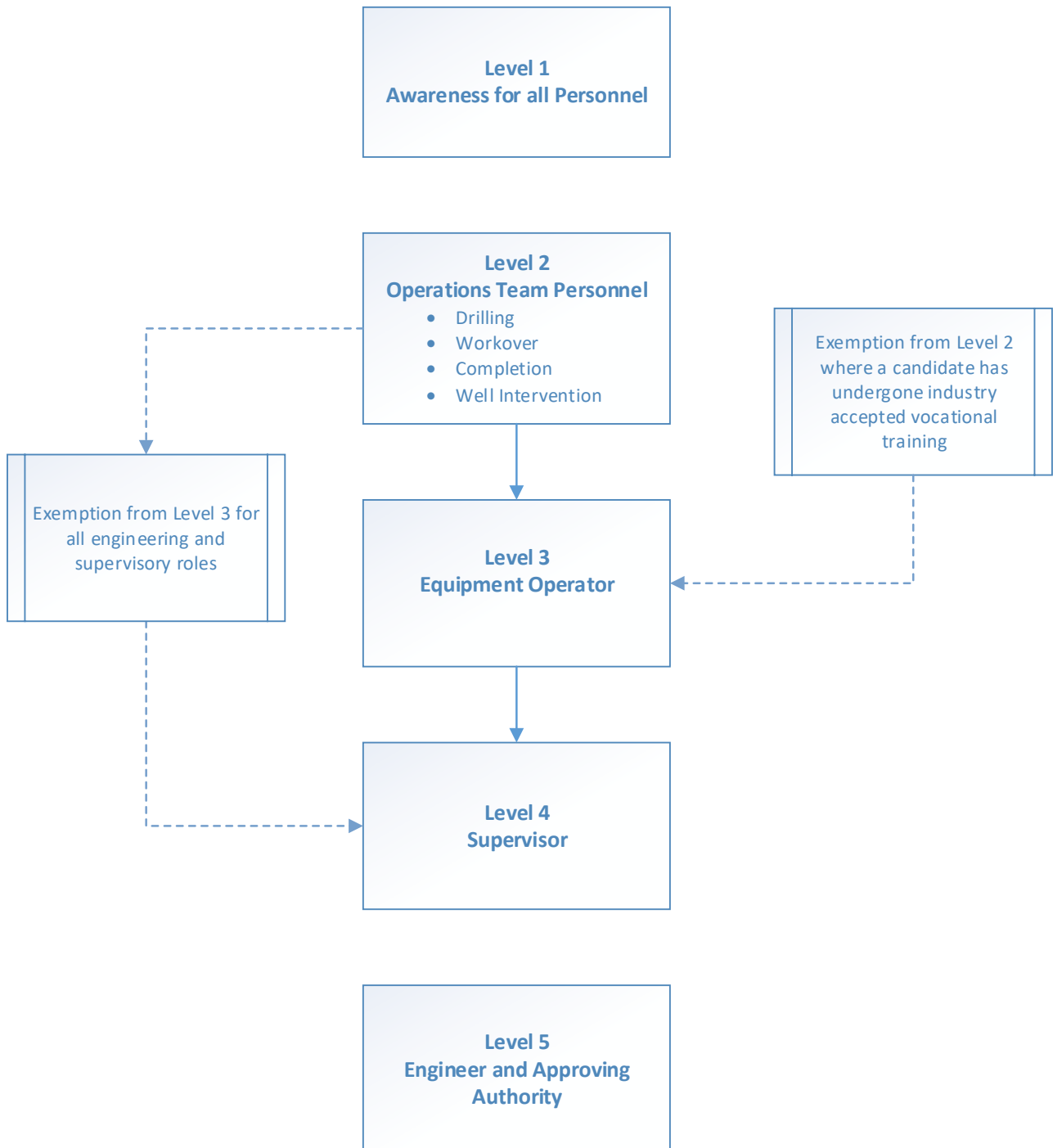
We are continuing to invest in our administrative systems to make the booking process as simple and time efficient as possible.

Please contact your Account Coordinator if you need any help with the new administration process or contact [iwcfinformation@iwcf.org](mailto:iwcfinformation@iwcf.org) for any other enquiries and feedback.

Yours sincerely,

A handwritten signature in black ink, appearing to read 'Antony Quin', is written over a light blue horizontal line.

**Antony Quin**  
Acting Chief Executive Officer



The employer is responsible for assessing the level of training an individual should attend.

Personnel should maintain at all times, certification appropriate to their current role within the operation and any dispensation should only be granted by the responsible well operator.